



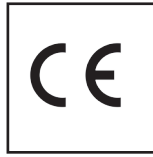
CAMPRODÓN

z VFZ series
Aluminum worm gearboxes

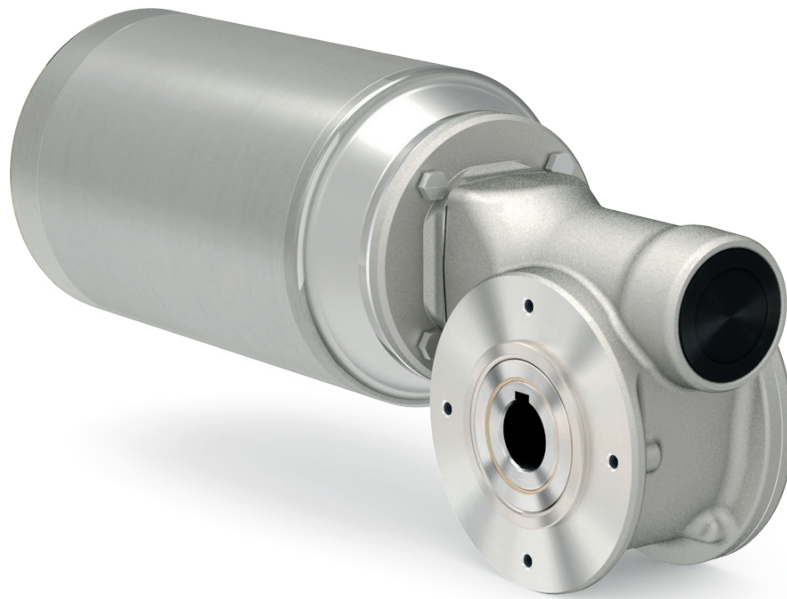
Riduttori a vite senza fine in alluminio

Section **1**
Sezione 1

This range is



certified



FEATURES

Caratteristiche

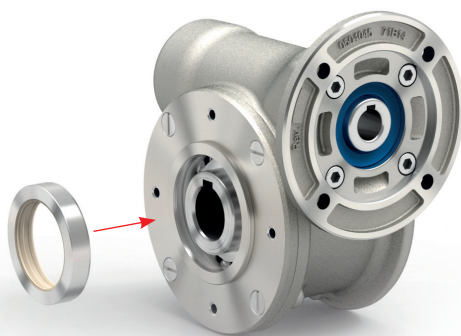
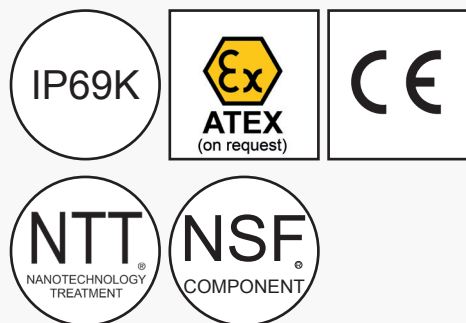
VFZ series Aluminum worm gearboxes

Riduttori a vite senza fine in alluminio

Type Tipo	Torque Coppia	Center distance Interasse	Input power Potenza in entrata	Hollow output shaft Albero cavo in uscita
Z30	21 Nm	30 mm	0.06 ÷ 0.18 kW	ø14 mm
Z45	41 Nm	45 mm	0.09 ÷ 0.37 kW	ø18 mm
Z50	72 Nm	50 mm	0.12 ÷ 0.75 kW	ø25 mm
Z63	147 Nm	63 mm	0.37 ÷ 1.8 kW	ø25 mm
Z85	347 Nm	85 mm	0.55 ÷ 4.0 kW	ø35 mm



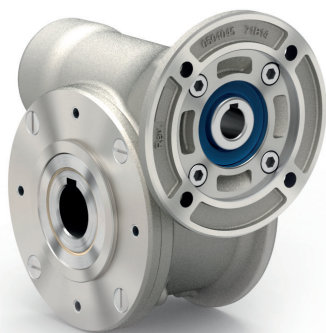
This product is:



Twin viton seals with stainless steel 316L shield.



Doppio anello di tenuta in viton con schermo protettivo in acciaio inox AISI 316L.



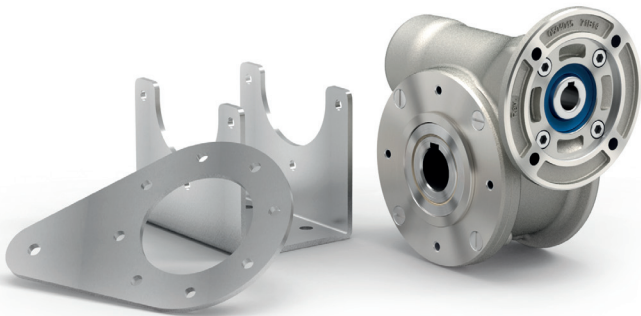
NTT™ stands for a special surface treatment which results in modified external properties of the complete unit in order to get a smooth surface and an higher corrosion resistance.

NTT™ è uno speciale trattamento che come risultato ha la modifica delle proprietà superficiali del riduttore allo scopo di ottenere una superficie liscia e con maggiore resistenza alla corrosione.



Output shaft and hollow shaft in AISI 316L.

Mozzo e albero in uscita in AISI 316L.



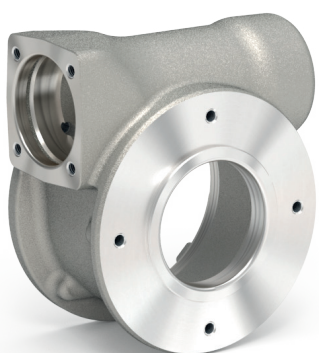
All stainless steel 316L hardware.

Viteria e kit in acciaio inox AISI 316L.



CuSn12Ni (C91700) Nickel bronze worm gears are centrifugally cast onto an iron hub for maximum strength and superior life. Removable hollow shaft with key for safe torque transmissions.

Corona in bronzo al Nickel CuSn12Ni (C91700) centrifugato e mozzo in acciaio inox per massima resistenza e durata superiore. Albero cavo removibile con chiavetta mozzo/corona.



Housing with special smooth surfaces.

Cassa con finitura speciale liscia.

Z30

21 Nm

VFZ series Aluminum worm gearboxes

Riduttori a vite senza fine in alluminio

Input speed (n_1) = 1400 min⁻¹

Output speed n_2 [min ⁻¹]	Ratio i	Motor power P_{1M} [kW]	Output torque M_{2M} [Nm]	Service factor f.s	Nominal power P_{1R} [kW]	Nominal torque M_{2R} [Nm]	B5 motor flanges		B14 motor flanges		Dynamic efficiency RD	Tooth module [mm]	Ratio code
							-	-	-O 56	-P 63			
280	5	0.18	5	3.3	0.60	17			C		82	1.26	09
200	7	0.18	7	2.4	0.44	17			C		80	1.44	01
140	10	0.18	10	1.8	0.32	17			C		78	1.44	02
93	15	0.18	13	1.4	0.25	19			C		73	1.44	03
70	20	0.18	17	1.1	0.20	19			C		70	1.09	04
47	30	0.12	15	1.4	0.17	21			C		62	1.44	05
35	40	0.12	19	1.1	0.13	20			C		57	1.09	06
23	61	0.09	19	1.1	0.10	20			C		50	0.72	07
17.5	80	0.06	16	1.0	0.06	16			C		48	0.56	08
14	100	0.06*	16	0.5	0.03	8			C		40	0.45	10

* Power higher than the maximum one which can be supported by the gearbox. Select according to the torque M_{2R}

Potenza superiore a quella massima sopportabile dal riduttore. Selezionare in base al momento torcente M_{2R}

Motor flanges available
Flange motore disponibili



B) Supplied with reduction bushing
Fornito con bussola di riduzione



B) Available on request without reduction bushing
Disponibile a richiesta senza bussola di riduzione



C) Motor flange holes position
Posizione fori flangia motore

Lubrication

Lubrificazione

Unit Z30 is supplied with synthetic oil to assure long life lubrication.

Food grade oil is available on request.

See Table 1 for lubrication and recommended quantity.

See Table 2 for possible radial and axial loads on the gearbox.

Il riduttore tipo Z30 viene fornito con olio sintetico e lubrificazione tipo "long life".

Disponibile a richiesta olio alimentare.

Vedi Tabella 1 per oli e quantità consigliati.

Vedi Tabella 2 per i carichi radiali e assiali applicabili al riduttore.

Oil quantity for
all positions:
0.025Lt.

Quantità olio per tutte
le posizioni: 0.025Lt.

Agip
Telium VSF 320

Shell
Omala S4 WE 320

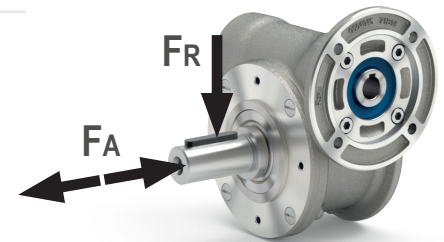
Radial and axial loads

Carichi radiali e assiali

Output shaft

Albero di uscita

n_2 [min ⁻¹]	F_A [N]	F_R [N]
200	120	600
150	140	700
100	160	800
75	180	900
50	200	1000
25	250	1250
15	280	1400



Input shaft

Albero in entrata

n_1 [min ⁻¹]	F_A [N]	F_R [N]
1400	20	100

* Strong axial loads in the DX direction are not allowed.

* Non sono consentiti forti carichi assiali con direzione DX

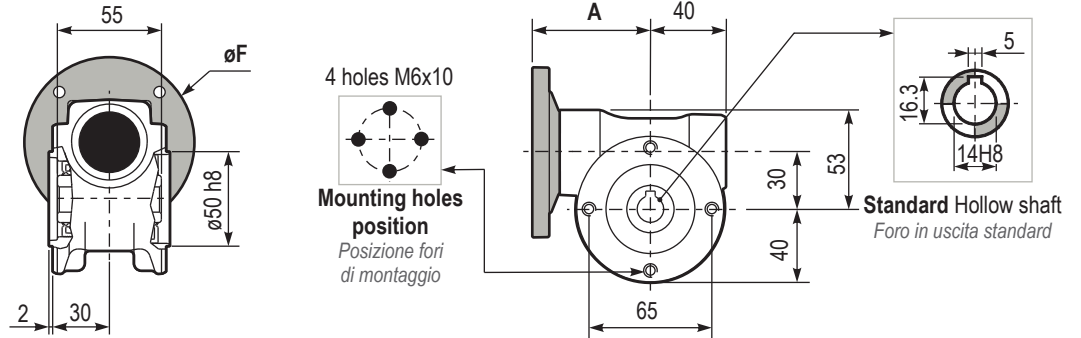
Tab. 1

Tab. 2

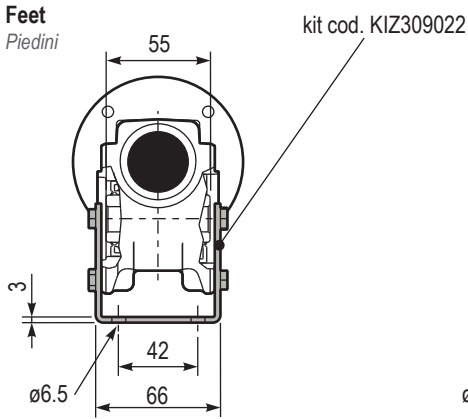
PZ30UN.. Basic gearbox
Riduttore base

Gearbox weight 1.25 kg
Peso riduttore

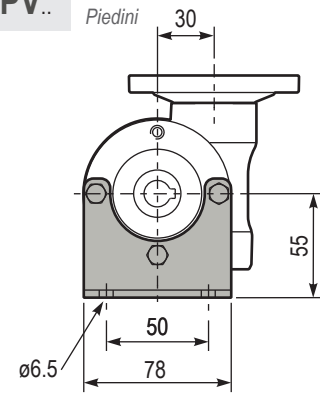
M. flanges	Kit code	øF	A
56B14	KZ304046	80	62
63B14	KZ304045	90	63



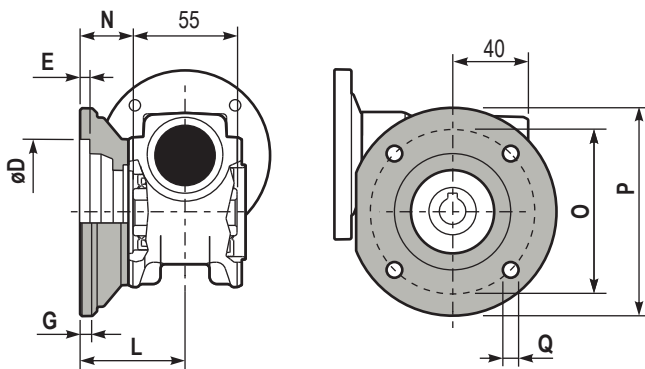
PZ30PA.. Feet
Piedini



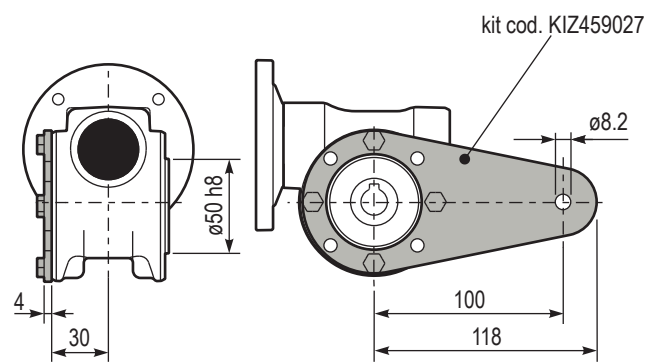
PZ30PV.. Feet
Piedini



PZ30FC.. Output flange
Flangia uscita

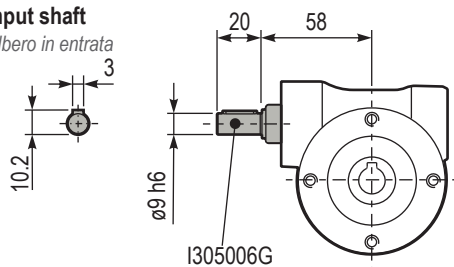


PZ30BR.. Reaction arm
Braccio di reazione

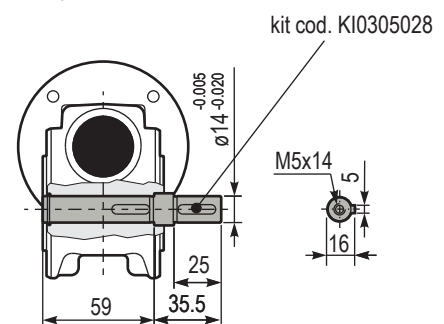


Type	øD	E	G	L	N	O	P	Q	Kit code
FC	50 ^{+0.15} / _{+0.05}	6	6	50.5	23	68	80	7	KZ309010
FL	60 ^{+0.15} / _{+0.05}	6	6	55.5	28	87	110	8.5	KZ459010

RZ30UN.. Input shaft
Albero in entrata



PZ30..S.. Single output shaft
Albero semplice in uscita





Z45

41 Nm

VFZ series Aluminum worm gearboxes

Riduttori a vite senza fine in alluminio

Input speed (n_1) = 1400 min⁻¹

Output speed n_2 [min ⁻¹]	Ratio i	Motor power P_{1M} [kW]	Output torque M_{2M} [Nm]	Service factor f.s	Nominal power P_{1R} [kW]	Nominal torque M_{2R} [Nm]	B5 motor flanges		B14 motor flanges			Dynamic efficiency RD	Tooth module  [mm]	Ratio code 
							-	-	-O	-P	-Q			
200	7	0.37	14	2.2	0.80	30	-	-	-O	-P	-Q	80	2.2	01
140	10	0.37	20	1.5	0.57	30	-	-	56	63	71	79	2.2	02
100	14	0.37	27	1.1	0.41	30	-	-	C	C		77	2.4	03
67	21	0.37	36	1.2	0.43	41	-	-	C	C		67	1.6	04
50	28	0.25	31	1.3	0.33	41	-	-	C	C		65	2.5	05
38	37	0.25	40	1.0	0.26	41	-	-	C	C		63	1.8	06
30	46	0.25	46	0.9	0.22	41	-	-	C	C		59	1.5	07
23	60	0.18	41	1.0	0.18	41	-	-	C	C		56	1.2	08
20	70	0.12	31	1.0	0.12	30	-	-	C	C		54	1.0	09
13.7	102	0.09	31	1.0	0.09	29	-	-	C	C		49	0.72	10

Motor flanges available
Flange motore disponibili



B) Supplied with reduction bushing
Fornito con bussola di riduzione



B) Available on request without reduction bushing
Disponibile a richiesta senza bussola di riduzione



C) Motor flange holes position
Posizione fori flangia motore

Lubrication

Lubrificazione

Unit Z45 is supplied with synthetic oil to assure long life lubrication.

Food grade oil is available on request.

See Table 1 for lubrication and recommended quantity.

See Table 2 for possible radial and axial loads on the gearbox.

Il riduttore tipo Z45 viene fornito con olio sintetico e lubrificazione tipo "long life".

Disponibile a richiesta olio alimentare.

Vedi Tabella 1 per oli e quantità consigliati.

Vedi Tabella 2 per i carichi radiali e assiali applicabili al riduttore.

Oil quantity for
all positions:
0.08Lt.

Agip
Telium VSF 320

Shell
Omala S4 WE 320

Quantità olio per tutte
le posizioni: 0.08Lt.

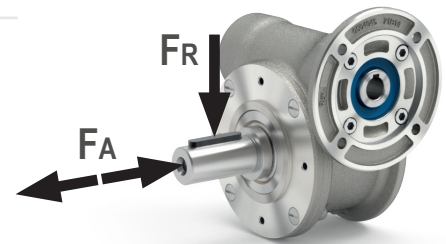
Radial and axial loads

Carichi radiali e assiali

Output shaft

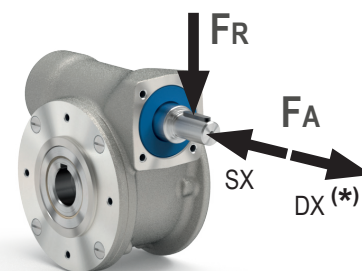
Albero di uscita

n_2 [min ⁻¹]	F_A [N]	F_R [N]
200	180	900
150	200	1000
100	220	1100
75	240	1200
50	260	1400
25	300	1800
15	400	2000



Input shaft

Albero in entrata



n_1 [min ⁻¹]	F_A [N]	F_R [N]
1400	42	210

* Strong axial loads in the DX direction are not allowed.

* Non sono consentiti forti carichi assiali con direzione DX

Tab. 1

Tab. 2

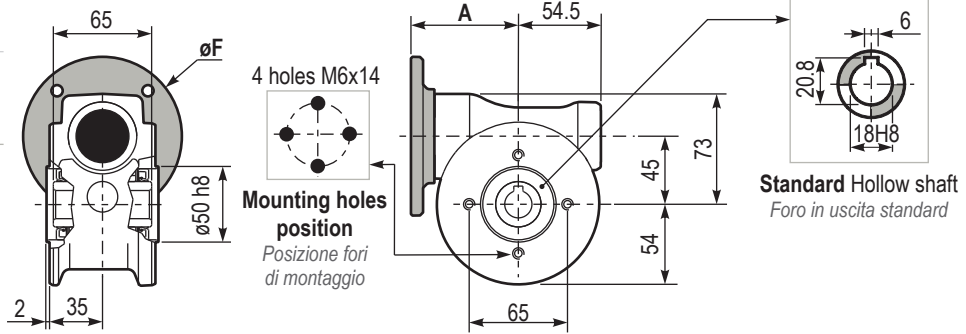
41
Nm

Z45

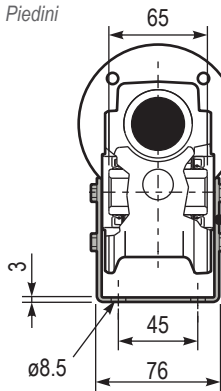
PZ45UN.. Basic gearbox
Riduttore base

Gearbox weight 2.50 kg
Peso riduttore

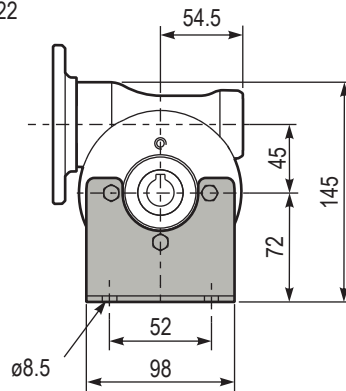
M. flanges	Kit code	øF	A
56B14	KZ454049	80	71.5
63B14	KZ454047	90	74
71B14	KZ454045	105	71.5



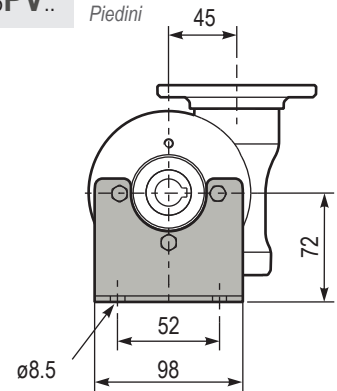
PZ45PA.. Feet
Piedini



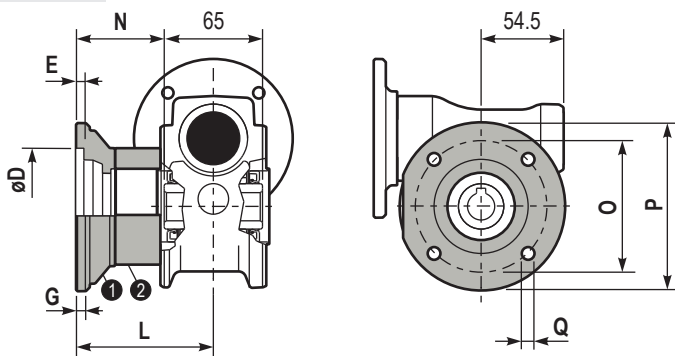
kit cod. KIZ459022



PZ45PV.. Feet
Piedini

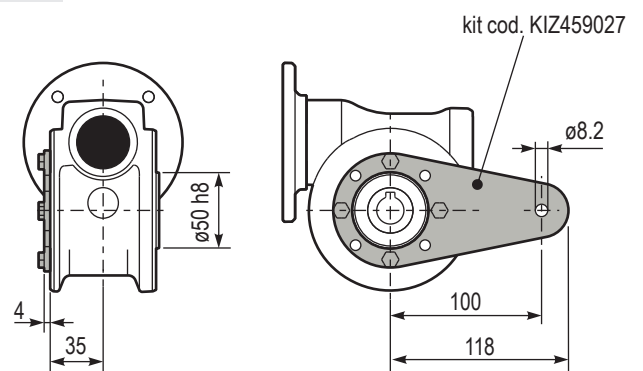


PZ45FC.. Output flange
Flangia uscita

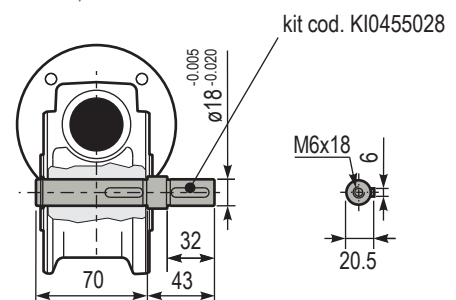


Type	øD	E	G	L	N	O	P	Q	Kit code
FC	60 ^{+0.15} / _{+0.05}	9	9	60.5	28	87	110	8.5	1 KZ459010 2 -
FL	60 ^{+0.15} / _{+0.05}	9	9	90.5	58	87	110	8.5	1 KZ459010 2 KZ450200

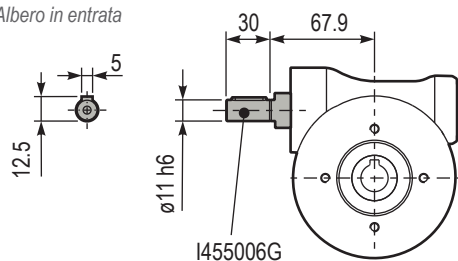
PZ45BR.. Reaction arm
Braccio di reazione



PZ45..S.. Single output shaft
Albero semplice in uscita



RZ45UN.. Input shaft
Albero in entrata



Z50

72 Nm

VFZ series Aluminum worm gearboxes

Riduttori a vite senza fine in alluminio

Input speed (n_1) = 1400 min⁻¹

Output speed n_2 [min ⁻¹]	Ratio i	Motor power P_{1M} [kW]	Output torque M_{2M} [Nm]	Service factor $f.s$	Nominal power P_{1R} [kW]	Nominal torque M_{2R} [Nm]	B5 motor flanges			B14 motor flanges				Dynamic efficiency RD	Tooth module [mm]	Ratio code
							-	-	-	-O	-P	-Q	-R			
200	7	0.75	29	1.9	1.5	57	-	-	-	-O	-P	-Q	-R	82	2.5	01
140	10	0.75	41	1.5	1.1	62	-	-	-	56	63	71	80	80	2.4	02
100	14	0.75	57	1.2	0.90	68	-	-	-		C			79	2.6	03
78	18	0.55	51	1.2	0.67	62	-	-	-		C			75	2.0	04
54	26	0.55	67	1.0	0.54	66	-	-	-		C			69	2.7	05
47	30	0.55	79	0.9	0.50	72	-	-	-		C			70	2.5	12
39	36	0.37	63	1.2	0.43	72	-	-	-	C	C			69	2.1	06
33	43	0.37	72	1.0	0.35	68	-	-	-	C	C			66	1.8	07
28	50	0.25	53	1.2	0.31	66	-	-	-	C	C			62	1.5	13
23	60	0.25	59	1.0	0.26	62	-	-	-	C	C			58	1.3	08
21	68	0.25	66	0.9	0.22	58	-	-	-	C	C			57	1.2	09
17.5	80	0.18	53	1.1	0.19	57	-	-	-	C	C			54	1.0	10
14	100	0.12	41	1.3	0.15	51	-	-	-	C	C			50	0.8	11

Motor flanges available
Flange motore disponibili



B) Supplied with reduction bushing
Fornito con bussola di riduzione



B) Available on request without reduction bushing
Disponibile a richiesta senza bussola di riduzione



C) Motor flange holes position
Posizione fori flangia motore

Lubrication

Lubrificazione

Unit Z50 is supplied with synthetic oil to assure long life lubrication.
Food grade oil is available on request.

See Table 1 for lubrication and recommended quantity.

See Table 2 for possible radial and axial loads on the gearbox.

Il riduttore tipo Z50 viene fornito con olio sintetico e lubrificazione tipo "long life".

Disponibile a richiesta olio alimentare.

Vedi Tabella 1 per oli e quantità consigliati.

Vedi Tabella 2 per i carichi radiali e assiali applicabili al riduttore.

Oil quantity for
all positions:
0.12Lt.

Quantità olio per tutte
le posizioni: 0.12Lt.

Agip
Telium VSF 320

Shell
Omala S4 WE 320

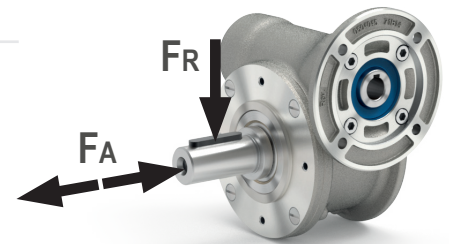
Radial and axial loads

Carichi radiali e assiali

Output shaft

Albero di uscita

n_2 [min ⁻¹]	F_A [N]	F_R [N]
200	240	1200
150	280	1400
100	300	1500
75	340	1700
50	380	1900
25	480	2500
15	560	2800



Input shaft

Albero in entrata

n_1 [min ⁻¹]	F_A [N]	F_R [N]
1400	76	380

* Strong axial loads in the DX direction are not allowed.

* Non sono consentiti forti carichi assiali con direzione DX

Tab. 1

Tab. 2

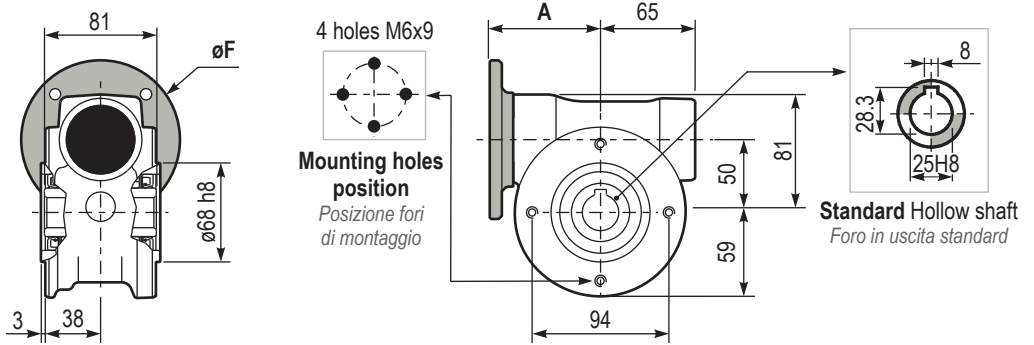
72
Nm

Z50

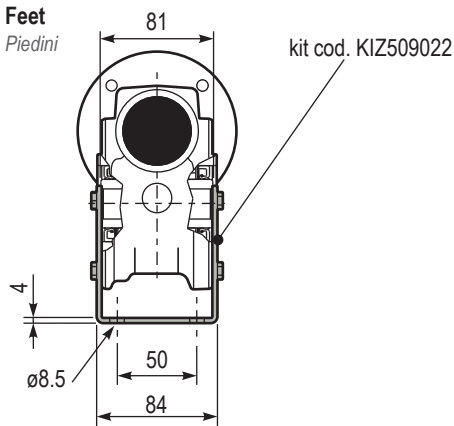
PZ50UN.. Basic gearbox
Riduttore base

Gearbox weight 3.70 kg
Peso riduttore

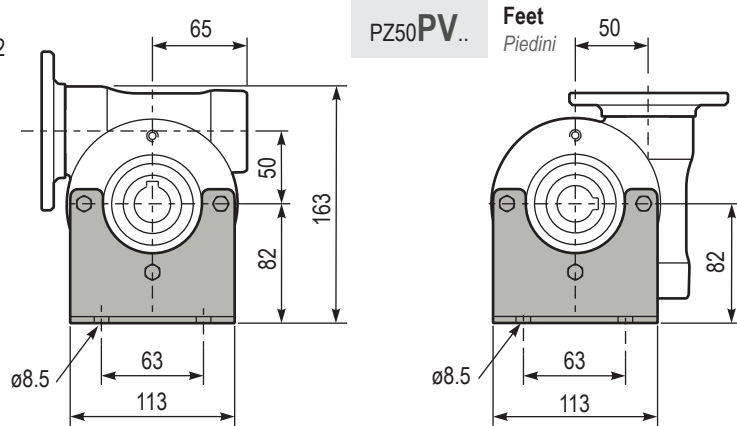
M. flanges	Kit code	øF	A
56B14	KZ504049	80	76
63B14	KZ504047	90	78.5
71B14	KZ504045	105	76
80B14	KZ504046	120	76.5



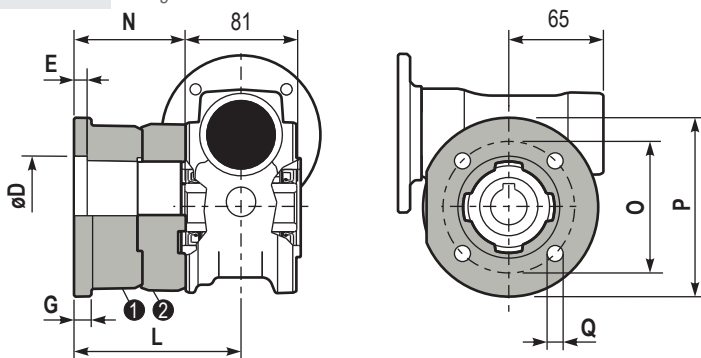
PZ50PA.. Feet
Piedini



PZ50PV.. Feet
Piedini

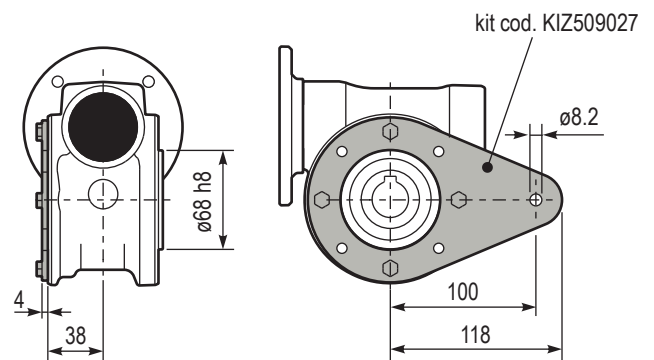


PZ50FC.. Output flange
Flangia uscita

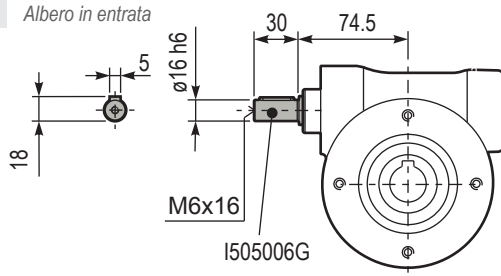


Type	øD	E	G	L	N	O	P	Q	Kit code
FC	70 ^{+0.20} _{+0.15}	9	12	85	44.5	90	123	10.5	① KZ509010 ② -
FL	70 ^{+0.20} _{+0.15}	9	12	114.5	74	90	123	10.5	① KZ509010 ② KZ500200

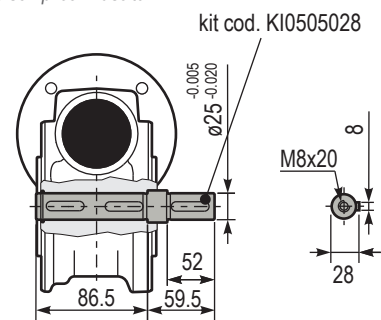
PZ50BR.. Reaction arm
Braccio di reazione



RZ50UN.. Input shaft
Albero in entrata



PZ50..S.. Single output shaft
Albero semplice in uscita



Z63

147 Nm

VFZ series Aluminum worm gearboxes

Riduttori a vite senza fine in alluminio

Input speed (n_1) = 1400 min⁻¹

Output speed n_2 [min ⁻¹]	Ratio i	Motor power P_{1M} [kW]	Output torque M_{2M} [Nm]	Service factor $f.s$	Nominal power P_{1R} [kW]	Nominal torque M_{2R} [Nm]	B5 motor flanges				B14 motor flanges			Dynamic efficiency RD	Tooth module [mm]	Ratio code
							-	-	-	-	-Q	-R	-T			
200	7	1.8	71	1.8	3.2	125	-	-	-	-	-Q	-R	-T	83	3.1	01
140	10	1.8	99	1.4	2.4	134	-	-	-	-	71	80	90	81	3.1	02
93	15	1.5	121	1.1	1.7	138	-	-	-	-	C	C		79	3.1	03
74	19	1.1	111	1.2	1.4	138	-	-	-	-	C	C		78	2.6	04
58	24	1.1	135	1.0	1.2	142	-	-	-	-	C	C		75	2.0	05
47	30	1.1	167	0.9	0.96	146	-	-	-	-	C	C		74	3.2	06
39	36	0.75	125	1.2	0.88	147	-	-	-	-	C	C		68	2.7	07
35	40	0.75	135	1.0	0.78	140	-	-	-	-	C	C		66	2.5	13
31	45	0.55	111	1.2	0.67	135	-	-	-	-	C	C		66	2.1	08
23	60	0.55	140	0.9	0.51	130	-	-	-	-	C	C		62	1.6	12
21	67	0.55	151	0.8	0.45	124	-	-	-	-	C	C		60	1.5	09
17.5	80	0.37	115	1.0	0.38	119	-	-	-	-	C	C		57	1.3	10
14.9	94	0.37	123	1.0	0.36	119	-	-	-	-	C	C		52	1.1	11

Motor flanges available
Flange motore disponibili



B) Supplied with reduction bushing
Fornito con bussola di riduzione

B) Available on request without reduction bushing
Disponibile a richiesta senza bussola di riduzione



C) Motor flange holes position
Posizione fori flangia motore

Lubrication

Lubrificazione

Unit Z63 is supplied with synthetic oil to assure long life lubrication.
Food grade oil is available on request.

See Table 1 for lubrication and recommended quantity.

See Table 2 for possible radial and axial loads on the gearbox.

Il riduttore tipo Z63 viene fornito con olio sintetico e lubrificazione tipo "long life".

Disponibile a richiesta olio alimentare.

Vedi Tabella 1 per oli e quantità consigliati.

Vedi Tabella 2 per i carichi radiali e assiali applicabili al riduttore.

Oil quantity for
all positions:
0.30Lt.

Quantità olio per tutte
le posizioni: 0.30Lt.

Agip
Telium VSF 320

Shell
Omala S4 WE 320

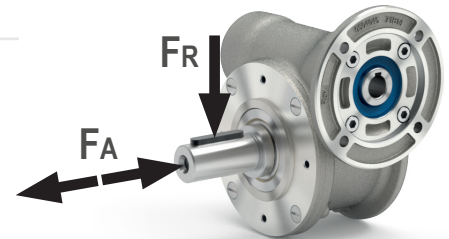
Radial and axial loads

Carichi radiali e assiali

Output shaft

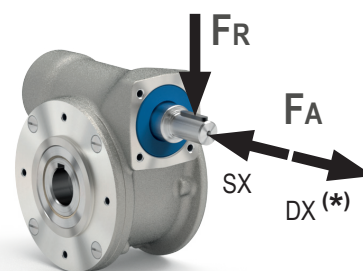
Albero di uscita

n_2 [min ⁻¹]	F_A [N]	F_R [N]
200	360	1800
150	400	2000
100	460	2300
75	500	2500
50	600	3000
25	700	3800
15	800	4000



Input shaft

Albero in entrata



n_1 [min ⁻¹]	F_A [N]	F_R [N]
1400	90	450

* Strong axial loads in the DX direction are not allowed.

* Non sono consentiti forti carichi assiali con direzione DX

Tab. 1

Tab. 2

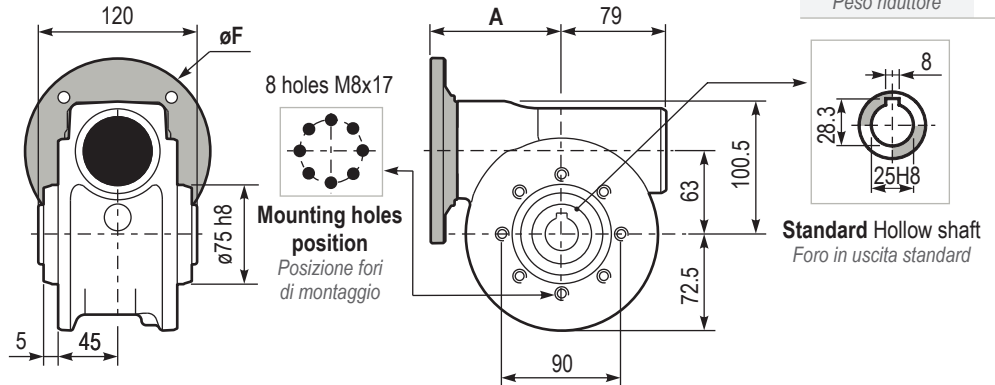
147
Nm

Z63

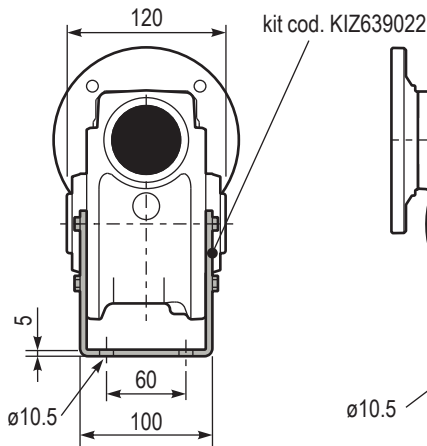
PZ63UN.. Basic gearbox
Riduttore base

Gearbox weight
Peso riduttore 6.70 kg

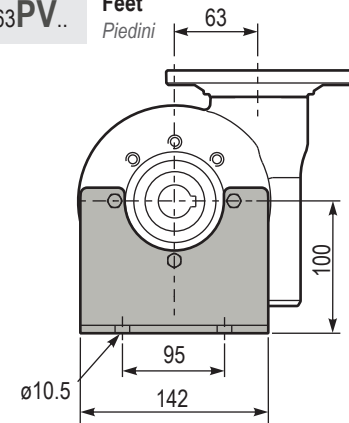
M. flanges	Kit code	øF	A
71B14	KZ634047	105	97.5
80B14	KZ634046	120	99.5
90B14	KZ634041	140	99.5



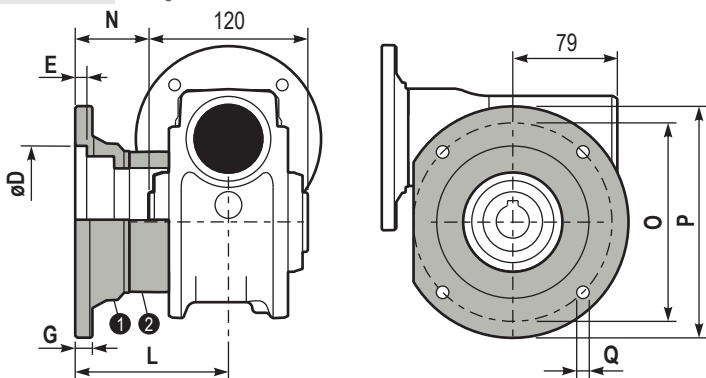
PZ63PA.. Feet
Piedini



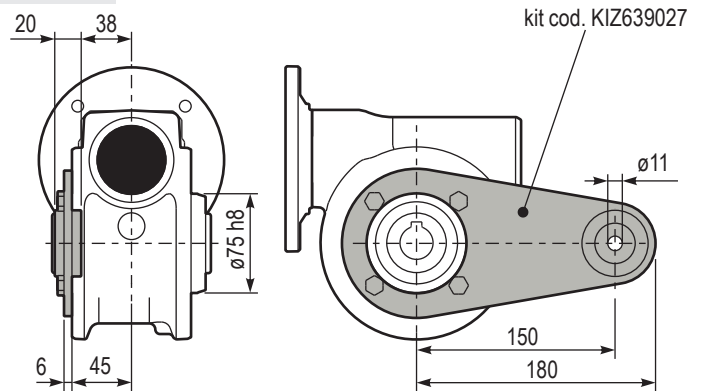
PZ63PV.. Feet
Piedini



PZ63FC.. Output flange
Flangia uscita

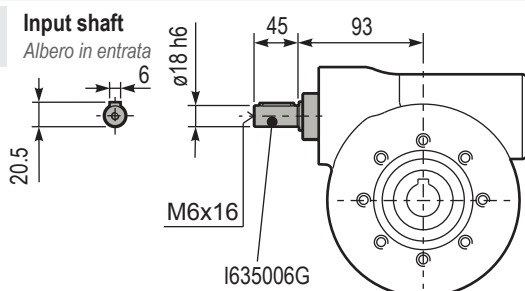


PZ63BR.. Reaction arm
Braccio di reazione

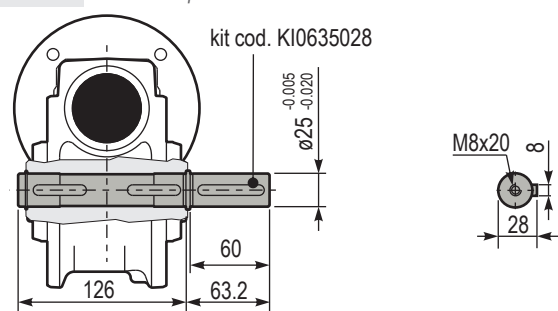


Type	øD	E	G	L	N	O	P	Q	Kit code
FC	115 ^{+0.20} _{-0.15}	7	13	86	26	150	175	11	① KZ639010 ② -
FL	115 ^{+0.20} _{-0.15}	7	13	116	56	150	175	11	① KZ639010 ② KZ630200

RZ63UN.. Input shaft
Albero in entrata



PZ63..S.. Single output shaft
Albero semplice in uscita



Z85

347 Nm

VFZ series Aluminum worm gearboxes

Riduttori a vite senza fine in alluminio

Input speed (n_1) = 1400 min⁻¹

Output speed n_2 [min ⁻¹]	Ratio i	Motor power P_{1M} [kW]	Output torque M_{2M} [Nm]	Service factor $f.s$	Nominal power P_{1R} [kW]	Nominal torque M_{2R} [Nm]	B5 motor flanges				B14 motor flanges			Dynamic efficiency RD	Tooth module [mm]	Ratio code
							-	-	-	-	-R	-T	-U			
200	7	4.0	168	1.5	6.1	257								88	4.23	01
140	10	4.0	218	1.3	5.2	284								80	4.2	02
100	14	3.0	223	1.4	4.1	305								78	4.5	03
70	20	2.2	237	1.2	2.7	294								79	3.4	04
64	22	2.2	258	1.1	2.5	294								78	3.1	05
50	28	2.2	315	1.1	2.4	347								75	4.7	06
37	38	1.5	276	1.2	1.8	336								71	3.5	07
30	46	1.5	320	1.0	1.5	326								68	3.1	08
27	52	1.1	258	1.1	1.2	289								66	2.7	09
21	67	1.1	327	0.9	0.97	289								65	2.1	10
18.9	74	0.75	220	1.2	0.91	268								58	1.9	11
14.6	96	0.55	191	1.3	0.70	242								53	1.5	12

Motor flanges available
Flange motore disponibili

B) Supplied with reduction bushing
Fornito con bussola di riduzione

B) Available on request without reduction bushing
Disponibile a richiesta senza bussola di riduzione

C) Motor flange holes position
Posizione fori flangia motore

Lubrication

Lubrificazione

Unit Z85 is supplied with synthetic oil to assure long life lubrication.
Food grade oil is available on request.

See Table 1 for lubrication and recommended quantity.

See Table 2 for possible radial and axial loads on the gearbox.

Il riduttore tipo Z85 viene fornito con olio sintetico e lubrificazione tipo "long life".

Disponibile a richiesta olio alimentare.

Vedi Tabella 1 per oli e quantità consigliati.

Vedi Tabella 2 per i carichi radiali e assiali applicabili al riduttore.

Oil quantity for
all positions:
0.95Lt.

Agip
Telium VSF 320

Shell
Omala S4 WE 320

Quantità olio per tutte
le posizioni: 0.95Lt.

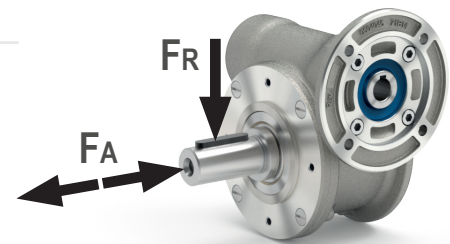
Radial and axial loads

Carichi radiali e assiali

Output shaft

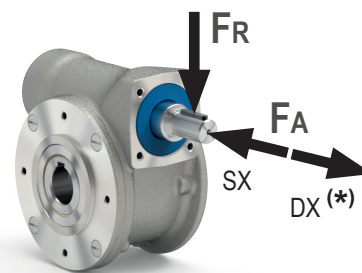
Albero di uscita

n_2 [min ⁻¹]	F_A [N]	F_R [N]
200	500	2500
150	580	2900
100	600	3000
75	700	3500
50	800	4000
25	1000	5000
15	1160	5800



Input shaft

Albero in entrata



n_1 [min ⁻¹]	F_A [N]	F_R [N]
1400	160	809

* Strong axial loads in the DX direction are not allowed.

* Non sono consentiti forti carichi assiali con direzione DX

Tab. 1

Tab. 2

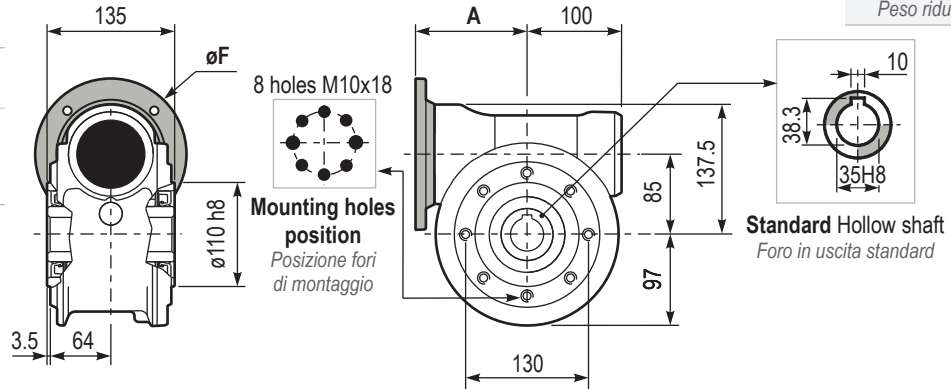
347
Nm

Z85

PZ85UN.. Basic gearbox
Riduttore base

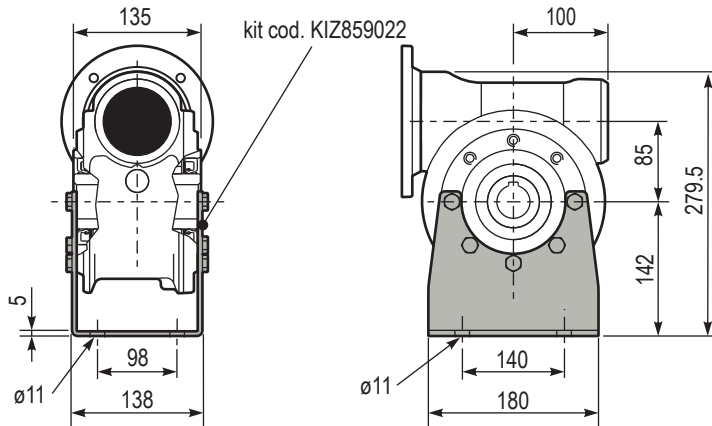
Gearbox weight 13.00 kg
Peso riduttore

M. flanges	Kit code	øF	A
80B14	KZ854046	120	118.5
90B14	KZ854045	140	118.5
100/112B14	KZ854047	160	127.5

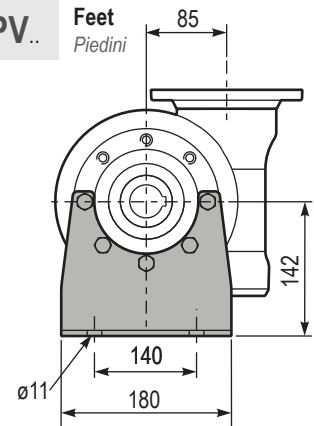


PZ85PA.. Feet
Piedini

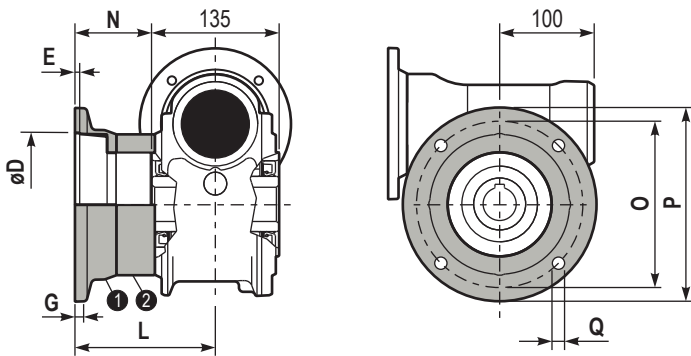
kit cod. KIZ859022



PZ85PV.. Feet
Piedini

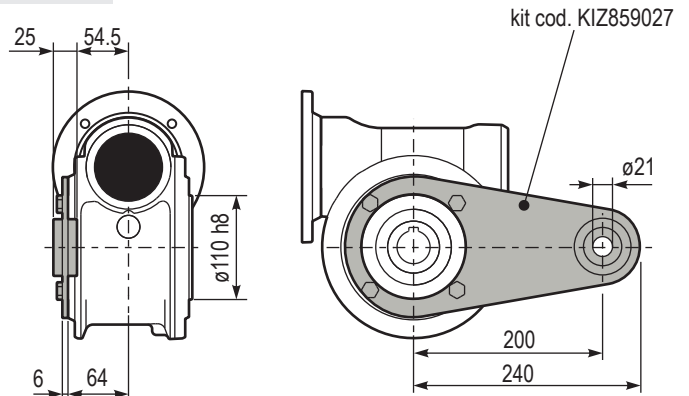


PZ85FC.. Output flange
Flangia uscita

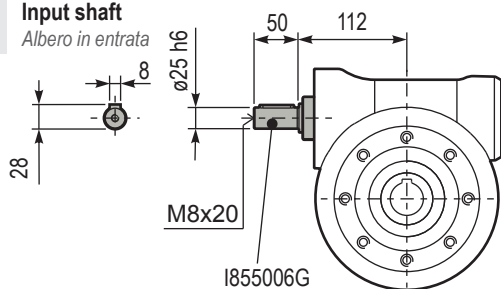


Type	øD	E	G	L	N	O	P	Q	Kit code
FC	152 ^{+0.06} _{-0.00}	5	16	108	40.5	176	205	13	① KZ859010 ② -
FL	152 ^{+0.06} _{-0.00}	5	16	148.5	81	176	205	13	① KZ859010 ② KZ850201

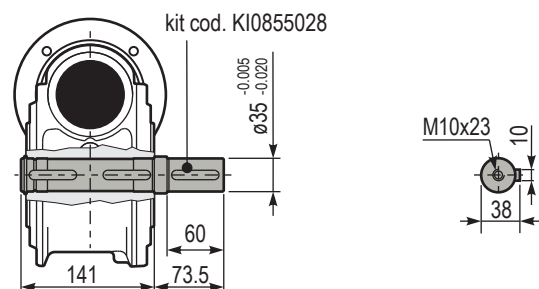
PZ85BR.. Reaction arm
Braccio di reazione



RZ85UN.. Input shaft
Albero in entrata



PZ85..S.. Single output shaft
Albero semplice in uscita



APM series Aluminum premium electric motors

Motori elettrici in alluminio

Section **AM**
Sezione AM



Sizes: IEC 63..90L, 4 poles
Voltage: Δ/Y 230/400V - 50Hz
Protection: I.Cl.F - IP69k - IC410
Efficiency: IE3 (IEC60034-30, IEC60034-2-1, $P_n \geq 0,75kW$)
Duty cycle: S1
Other features: INVERTER DUTY, HYGIENIC, PTO PROTECTION INCLUDED



FEATURES

Caratteristiche

APM series Aluminum premium electric motors

Motori elettrici in alluminio

Electrical motors of the APM series have no cooling fins and are treated with the innovative “Hi-Cleaning” coating applying nano particles (patented system), which makes the surface very easy to clean and resistant to major aggressive agents used in sanitizing.

La gamma APM non ha alette di raffreddamento ed è trattata con un innovativo rivestimento «Hi-Cleaning» alle nano particelle (sistema brevettato) che rende la superficie estremamente facile da pulire e resistente ai principali agenti aggressivi usati nella sanificazione.

All external components are manufactured in aluminium while motor shaft is produced in 420 stainless steel with magnetic properties and all screws are made of 316L stainless steel.

Tutti i componenti esterni sono realizzati in alluminio, l'albero motore è in acciaio AISI420 con proprietà magnetiche, tutte le viterie in AISI316L.

Standard plastic Hygienic cable gland.

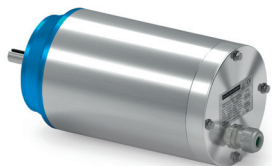
Pressacavo “igienico” standard in plastica.

Product label on the back cover

Etichetta sul coperchio posteriore.

Easy connection with Wire-to-Wire heat-shrinkable splicings.

L' utilizzo di connettori testa-testa termo-sigillanti rende semplice il collegamento dei cavi.



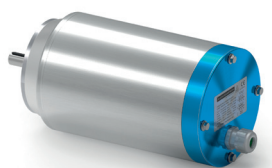
Totally enclosed and non-ventilated (IC410) design along with completely smooth surfaces ensures the highest hygienic standards.

Totamente chiuso, non ventilato (IC410), le superfici completamente lisce garantiscono gli standard di igienicità più elevati richiesti dal mercato.



The surface temperature is rather low thanks to an accurate electromagnetic design and additional internal active material. The efficiency class is IE3.

La temperatura di superficie è contenuta grazie ad una progettazione accurata. La classe di efficienza è IE3 ($\geq 0.75kW$).



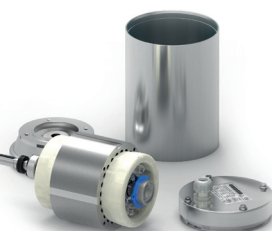
Pipe housing without weldings and terminal box on the NDE enhance the impact of an eye-catching design.

Carcassa tubolare senza saldature, coprimorsettiera posteriore e look accattivante.



Motors are suitable for INVERTER DUTY OPERATION with large range at constant torque, thanks to low loss laminations, vacuum impregnation of the windings and inverter duty magnet wires. Stator and rotor are coated with anti-oxidant painting.

I motori sono idonei al funzionamento con INVERTER con ampio range a coppia costante, grazie a lamiere a basse perdite e all'impregnazione degli avvolgimenti sottovuoto. Statore e rotore sono rivestiti con vernice antiossidante.



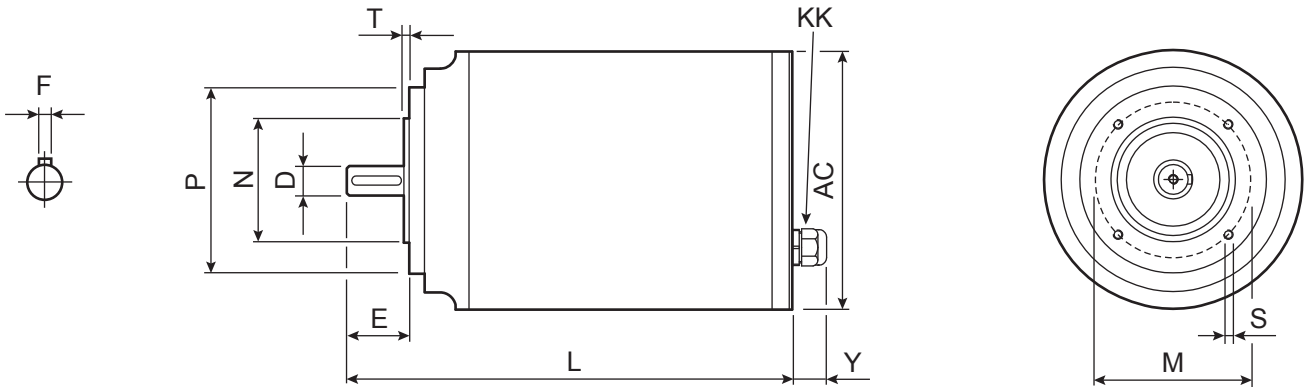
NDE bearing is axially locked. Precise mechanical execution.

Cuscinetto posteriore bloccato assialmente, esecuzione meccanica precisa.

B14

Dimensions Dimensioni

63A÷90L



Sizes: IEC 63..90L, 4 poles
 Voltage: Δ/Y 230/400V - 50Hz
 Protection: I.C.I.F - IP69k - IC410
 Efficiency: IE3 (IEC60034-30, IEC60034-2-1, $P_n \geq 0,75kW$)
 Duty cycle: S1
 Other features: INVERTER DUTY, HYGIENIC, PTO PROTECTION INCLUDED

4 poles B14

Motor	kW	IE3	rpm (min ⁻¹)	Nm	A (400V)	COS (ϕ)	D	F	E	L	AC	Y	N	M	P	T	S	Kg	KK
63A	0.12		1440	0.80	0.44	0.57	11 j6	4	23	229	131	24	60 j6	75	90	2.5	4xM5	6.9	M16x1.5 ø4-8 Tightening: 2 Nm
63B	0.18		1440	1.19	0.58	0.62	M4			244								8.0	
71A	0.25		1440	1.66	0.72	0.64	14 j6	5	30	266	131		70 j6	85	105	2.5	4xM6	9.4	M20x1.5 ø6-12 Tightening: 3 Nm
71B	0.37		1440	2.45	1.10	0.67	M5			286		27						11.1	
80A	0.55		1460	3.60	1.50	0.67	19 j6	6	40	280	166		80 j6	100	120	3	4xM6	15.3	
80B	0.75	IE3	1460	4.91	2.10	0.70	M6			305								18.0	
90S	1.1	IE3	1460	7.20	2.90	0.70	24 j6	8	50	345	166	30	95 j6	115	140	3	4xM8	22.7	M25x1.5 ø13-18 Tightening: 4 Nm
90L	1.5	IE3	1460	9.81	4.00	0.70	M8			390								28.4	